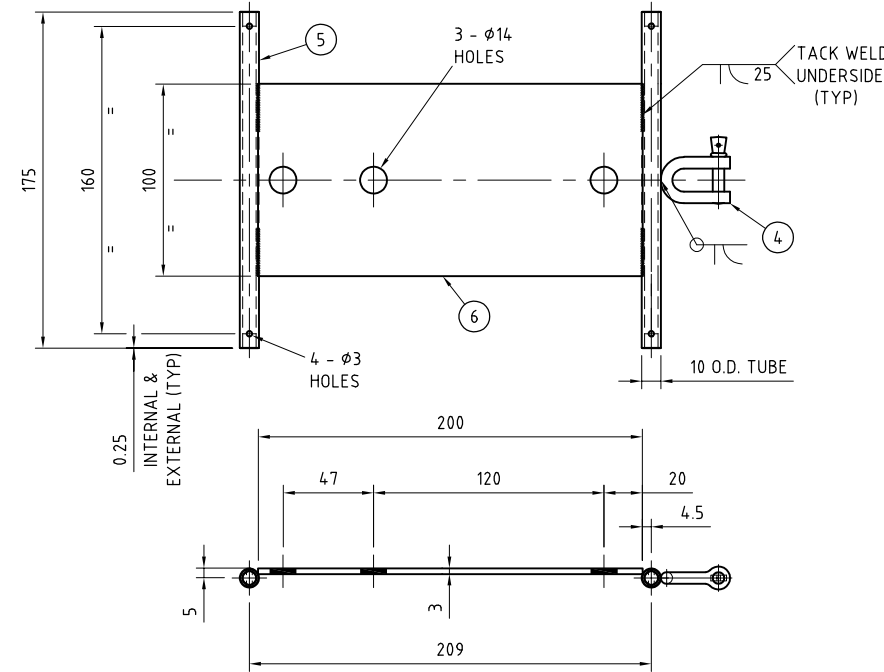
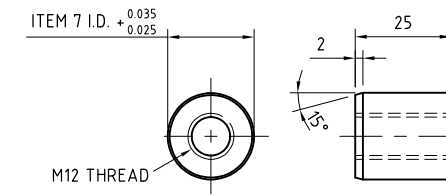


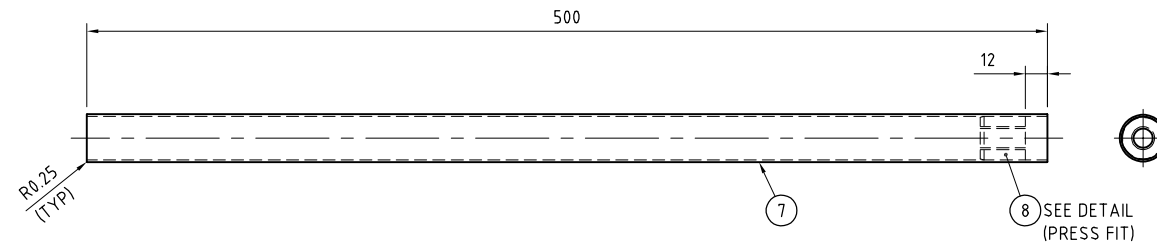
PLAN OF TROLLEY ASSEMBLY
SCALE:- 1:2



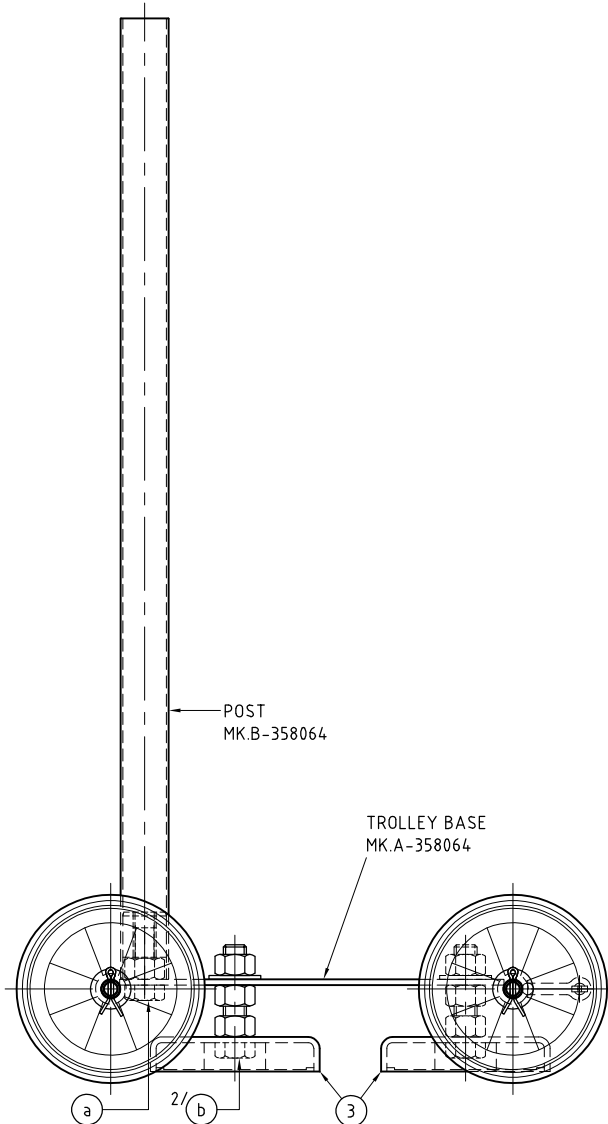
TROLLEY BASE - MK.A-358064
1 REQ'D
SCALE:- 1:2



DETAIL ITEM 8
SCALE:- 1:1



POST - MK.B-358064
1 REQ'D
SCALE:- 1:2



ELEVATION
SCALE:- 1:2

FASTENERS		
1) UNO, REFER STANDARD NOTES FOR BOLT SPECIFICATIONS		
2) UNO, ALL BOLTS TO BE SUPPLIED WITH 1 NUT & 1 FLAT WASHER		
ITEM	FASTENER TYPE	QTY
a	M12x30LG HEX. HD. SET SCREW + NUT	1
b	M12x50LG HEX. HD. SET SCREW + 3 NUTS + 1 FL. WASHER. GR.316 S/S	2

ITEM No	QTY	DESCRIPTION	LENGTH	UNIT (Kg) MASS	COMMENT
9	12	M10 FLAT WASHER			GR.316 S/STEEL
8	1	25 O.D. BAR	25	-	ALUMINIUM
7	1	25 O.D.x1 WALL TUBE	500	-	ALUMINIUM
6	1	3PLx100	200		GR.316 S/STEEL
5	2	10 O.D.x3.5 WALL TUBE	175		GR.316 S/STEEL
4	1	D SHACKLE - M6, GR.316 S/STEEL			HOBSON - HSH16DSM06
3	2	MAGNETIC GROUND CLAMP:- 800A	-	-	SERPENT & DOVE P/N STMEC800
2	4	M2.5 SPLIT PIN	20	-	GR.316 S/STEEL
1	4	100mm WHITE PLASTIC CENTRE WHEEL WITH RUBBER TYRE	-	-	AMBASSADOR 10mm AXLE HOLE

PORT WARATAH COAL SERVICES LTD - COMMON EQUIPMENT AND STANDARDS 07.00 GENERAL, 07.08, 07.09, 07.10, 07.62, 07.63 SHIP DRAUGHT MARK READING TROLLEY ARRANGEMENT					AS BUILT Drawing N° 358064 Rev N° 1		
KCT - 07.10 SHIPLOADER GENERAL ARRANGEMENT KL 4.6000 KCT - 07.09 SHIPLOADER GENERAL ARRANGEMENT KL 23101 KCT - 07.08 SHIPLOADER GENERAL ARRANGEMENT KL 14.474 CCT - 07.62 SHIPLOADER SL4. GENERAL ARRANGEMENT 350322 CCT - 07.00 SHIPLOADING GENERAL, 07.62, 07.63. AIR DRAUGHT ENVELOPE DIAGRAM 281268			Scale AS NOTED Drawing N°		Drawing Status Sheet N° 001 Size A1		
1 DRAWN FROM SAMPLE SUPPLIED BY M. CORRIGAN Rev 882895 Work Order 882895 D. MacASKILL Drawn 31/5/19 Date 31/5/19 Chkd/App.		PORT WARATAH COAL SERVICES P.O. Box 57, Carrington, NSW, 2294, ACN N° 001 363 828		Date Drawn 31/5/19 Checked A.MOORE Designed Design Checked PWCS Approval M. CORRIGAN		Drawing Status Sheet N° 001 Size A1	